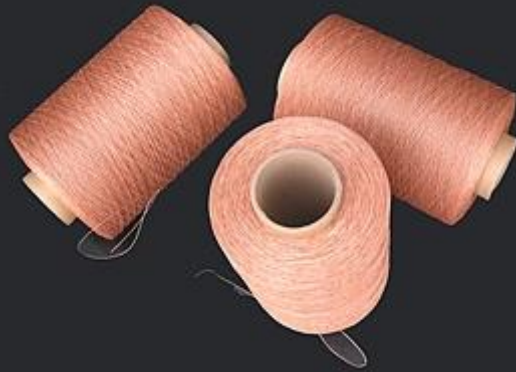
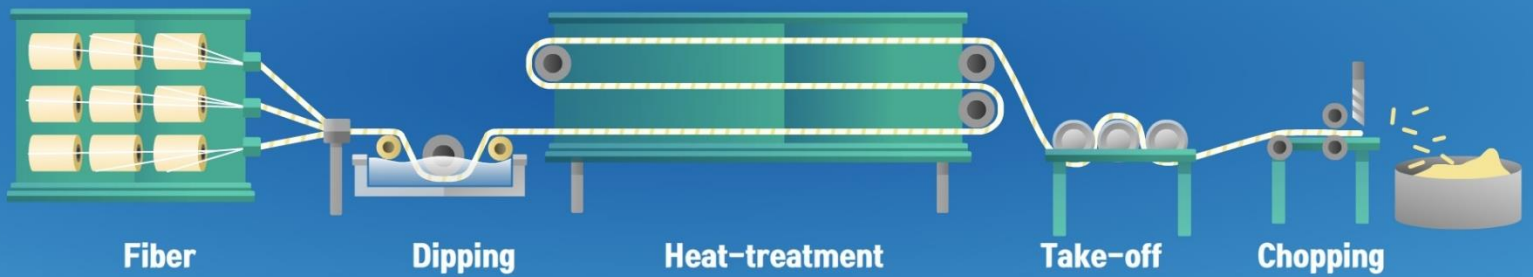




MISUNG POLYMER INC.



Reinforced Cord  
Reinforced Fabric  
Chopped Fiber for Reinforcement



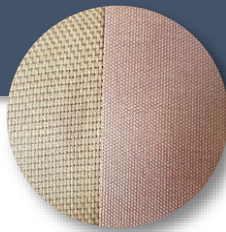
**MISUNG POLYMER INC.**

Misung Polymer Inc. is specialized in the fiber surface treatment and precision cutting. We coat various resins on the fiber surface with the heat treatment, and produce the precisely chopped fiber which is used as composite for various industrial materials like rubber, (belt, hose and tire), engineering plastic, super concrete, chop length between 1~999mm by 0.1mm unit, so as to therefore we can provide proper solution for the client's requirement.

## SURFACE TREATED FIBER & PRECISELY CHOPPED FIBER



**Reinforced  
Cord**



**Reinforced  
Fabric**



**Chopped Fiber  
For Reinforcement**



## COMPANY INTRODUCTION

### Company History

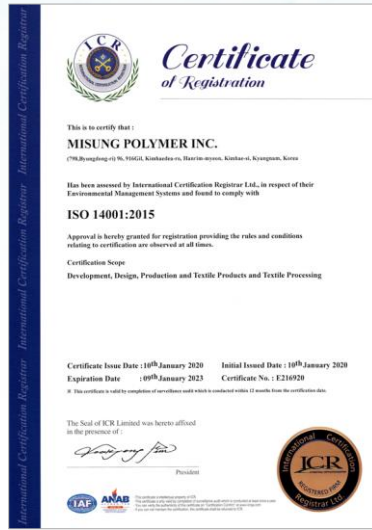
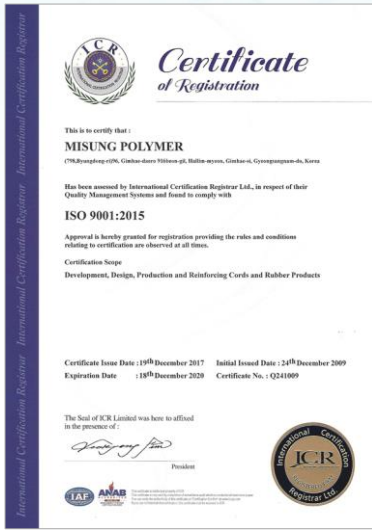


- [1999] Company established
- [2001] 2-Dipping heat treatment facility expansion for Rubber hose reinforcement (#1 Unit – 18 Ton/Month)
- [2006] ISO 9001:2000 Certificated
- [2009] Quality Certification of dipped Aramid Cord for rubber belt
- [2011] Patent No.10-0948243 (Method to manufacture carbon coating fiber for plane type heating element)
- [2013] 4-Dipping heat treatment facility expansion for Rubber belt reinforcement (#2 Unit - 10 Ton/Month)
- [2016] Development of adhesive resin for EPDM rubber & rubber boat
- [2018] Patent No. 10-1887814 (Bundle-type short fibers for fiber reinforced concrete and fiber Reinforced concrete using thereof)  
Patent No.10-1887815 (Bundle-type short fibers for fiber reinforced concrete using conjugate fiber and fiber Reinforced concrete using thereof)  
Converted to Corporation, Misung Polymer Inc.
- [2020] ISO 14001:2015 Certificated  
Cu-FreeOn antibacterial mask launching
- [2003] Quality certification of dipped PET & NYLON-66 cord for medium and high pressure rubber hoses.
- [2008] Quality certification of dipped PVA cord for brake rubber hoses
- [2010] Fiber chopping facility construction
- [2012] Quality certification of Air Bleed Yarn for tire manufacturing
- [2014] Development of Chopped Fiber for rubber and engineering plastic reinforcement
- [2017] Development of Chopped Fiber for super concrete reinforcement  
Development of sleeve hose for air suspension  
Quality certification of Conductive Air Bleed Yarn
- [2019] Patent No.10-1952069 (Bundle-type short fibers for fiber reinforced concrete using steel conjugate fiber and fiber Reinforced concrete using thereof)  
Patent No.10-1963081 (Bundle-type short fibers for fiber reinforced concrete using p-aramid conjugate fiber and fiber Reinforced concrete using thereof)



# COMPANY INTRODUCTION

## Certificate & Patents



ISO 9001:2015

ISO 14001:2015



Patent No. 10-1887814

Bundle-type short fibers for fiber reinforced concrete and fiber Reinforced concrete using thereof

Patent No. 10-1887815

Bundle-type short fibers for fiber reinforced concrete using conjugate fiber and fiber Reinforced concrete using thereof



Patent No. 10-1952069

Bundle-type short fibers for fiber reinforced concrete using steel conjugate fiber and fiber Reinforced concrete using thereof

Patent No. 10-1963081

Bundle-type short fibers for fiber reinforced concrete using p-aramid conjugate fiber and fiber Reinforced concrete using thereof



**COMPANY INTRODUCTION**  
**Facility**



**Dry Oven**



**Chemical Balance**



**Optical Microscope**



**Twist Tester**



**Universal Tester**



**Tension meter**



**Rubber Vulcanizer**



**Open Mill**



**Laminating M/C**



# Chopped Fiber for Reinforcement For Rubber Belt







## Chopped Fiber For Rubber Belt



Use for



BELTS

[CHOPPED FIBER for RUBBER BELTS]					
Reference No.	MSC-020	MSC-021	MSC-022	MSC-023	
Model No.	ACF-1.0mm(R)	ACF-3.0mm(R)	VCF-3.0mm(R)	PCF-5.0mm(R)	
Specification	1) Fiber	p-ARAMID	p-ARAMID	PET	
	2) Coating Resin	RFL	RFL	RFL	
	3) CHOP Length	1mm	3mm	3mm	5mm
	4) Color	Brown	Brown	Brown	Brown
Shape					
Characteristic	<ul style="list-style-type: none"> <li>- Heat-resistance</li> <li>- Wear-resistance</li> <li>- Low Dimensional Change Rate</li> <li>- Excellent Dispersibility</li> <li>- High Adhesive Strength with Rubber</li> </ul>	<ul style="list-style-type: none"> <li>- Heat-resistance</li> <li>- Wear-resistance</li> <li>- Low Dimensional Change Rate</li> <li>- Excellent Dispersibility</li> <li>- Excellent Adhesive Strength with Rubber</li> </ul>	<ul style="list-style-type: none"> <li>- Heat-resistance</li> <li>- Wear-resistance</li> <li>- Low Dimensional Change Rate</li> <li>- Excellent Dispersibility</li> <li>- High Adhesive Strength with Rubber</li> </ul>	<ul style="list-style-type: none"> <li>- Excellent Dispersibility</li> <li>- High Adhesive Strength with Rubber</li> <li>- Low Cost</li> </ul>	
Packing	1) PE Bag	5 kg/bag	5 kg/bag	5 kg/bag	5 kg/bag
	2) Corrugated Box	20 kg/box(=4bag/box)	20 kg/box(=4bag/box)	20 kg/box(=4bag/box)	20 kg/box(=4bag/box)
	3) PP Pallet	400 kg/pallet(=20box/pallet)	400 kg/pallet(=20box/pallet)	400 kg/pallet(=20box/pallet)	400 kg/pallet(=20box/pallet)
* Remarks					
1) Chopped fiber for rubber belt is normally chopped between 1~9mm length					
2) Detailed specification (fiber, coating resin, length or etc.) could be customized according to the client's requirements.					



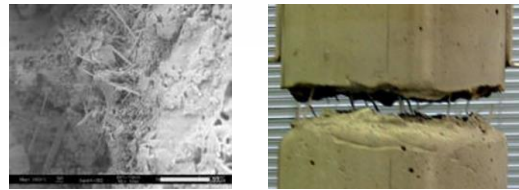
# Chopped Fiber for Reinforcement For Super Concrete



## Chopped Fiber For Super Concrete



Use for



Super Concrete

[CHOPPED FIBER for SUPER CONCRETE]					
Reference No.	MSC-024	MSC-025	MSC-026	MSC-027	
<i>Model No.</i>	SACF-19mm(R)	SVCF-13mm(R)	ACF-25mm(R)	ACF-8.0mm(R)	
Specification	1) Fiber	Steel Fiber(SUS) + p-ARAMID	Steel Fiber(SUS) + PVA	p-ARAMID	
	2) Coating Resin	RFL	PET	RFL	
	3) CHOP Length	19mm	13mm	25mm	8mm
	4) Color	Brown	Black	Brown	Brown
Shape					
Characteristic	- Heat-resistance - Wear-resistance - Low Dimensional Change Rate - Excellent Dispersibility - High Adhesive Strength with Concrete	- Heat-resistance - Wear-resistance - Low Dimensional Change - Excellent Dispersibility - High Adhesive Strength with Concrete	- Heat-resistance - Wear-resistance - Low Dimensional Change - Excellent Dispersibility - High Adhesive Strength with Concrete	- Heat-resistance - Wear-resistance - Low Dimensional Change - Excellent Dispersibility - Usable for Plastering with Concrete	
Packing	1) PE Bag	4 kg/bag	4 kg/bag	4.5 kg/bag	
	2) Corrugated box	16 kg/box(=4bag/box)	16 kg/box(=4bag/box)	18 kg/box(=4bag/box)	
	3) PP Pallet	320 kg/pallet(=20box/pallet)	320 kg/pallet(=20box/pallet)	320 kg/pallet(=20box/pallet)	360 kg/pallet(=20box/pallet)
* Remarks					
1) Chopped fiber for super concrete is normally chopped between 8~30mm length					
2) Detailed specification (fiber, coating resin, length or etc.) could be customized according to the client's requirements.					

**Chopped Fiber  
For Engineering Plastic**



[CHOPPED FIBER for ENGINEERING PLASTIC(EP)]				
Reference No.	MSC-028	MSC-029	MSC-030	MSC-031
Model No.	PPCF-6.0mm(N)	ACF-3.0mm(N)	CCF-6.0mm(A)	LCF-4.0mm(S)
Specification	1) Fiber	POLY PROPYLENE	p-ARAMID	LYOCELL
	2) Coating Resin	NONE	NONE	SILANE
	3) CHOP Length	6mm	3mm	4mm
	4) Color	White	Yellow	Black
Shape				
Characteristic	- Chemical-resistance - Usable for Weight Reduction - High Adhesive Strength with Plastic	- Heat-resistance - Wear-resistance - Low Dimensional Change Rate - Excellent Dispersibility - High Adhesive Strength with Plastic	- Heat-resistance - Wear-resistance - Low Dimensional Change Rate - Excellent Dispersibility - high Adhesive Strength with Plastic	- Low Dimensional Change - Excellent Dispersibility - High Adhesive Strength with Plastic
Packing	1) PE Bag	5 kg/bag	4 kg/bag	5 kg/bag
	2) Corrugated Box	20 kg/box(=4bag/box)	16 kg/box(=4bag/box)	20 kg/box(=4bag/box)
	3) PP Pallet	400 kg/pallet(=20box/pallet)	320 kg/pallet(=20box/pallet)	400 kg/pallet(=20box/pallet)
* Remarks				
1) Chopped fiber for Engineering plastic is normally chopped between 1~9mm length.				
2) Detailed specification (fiber, coating resin, length or etc.) could be customized according to the client's requirements.				

**Reinforced Cord**



**Hoses**



**Belts**

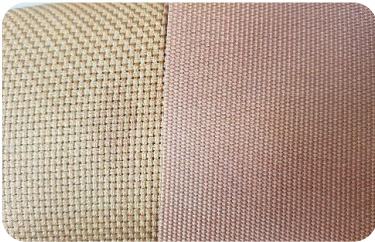


**Tires**



Raw Cord	Dipping Polymer	Applications
PET NYLON PVA RAYON p-ARAMID m-ARAMID CARBON GLASS FIBER	RFL (Resorcinol Formaldehyde Latex) ACRYL EPOXY POLY URETHANE PET	RUBBER TIRES RUBBER HOSES RUBBER BELTS RUBBER BAGS OTHER INDUSTRIALS

**Reinforced Fabric**



Raw Cord	Dipping Polymer	Applications
PET NYLON RAYON p-ARAMID m-ARAMID CARBON GLASS FIBER	RFL (Resorcinol Formaldehyde Latex) ACRYL EPOXY POLY URETHANE PET	BAG FABRIC WETSUIT RUBBER BOAT DIAPHRAGM OTHER INDUSTRIALS



**MISUNG POLYMER INC.**

<b>Address</b>	<b>(50850) #96, Gimhae-daero 916beon-gil, Hallim-myeon, Gimhae-si, Gyeongsangnam-do, South Korea</b>
<b>Tel</b>	<b>+82-70-4827-3989</b>
<b>Fax</b>	<b>+82-55-345-8570</b>
<b>Web Site</b>	<b><a href="http://msp-tex.com">http://msp-tex.com</a></b>
<b>Email</b>	<b><a href="mailto:misung_polymer@naver.com">misung_polymer@naver.com</a></b>